



Creating a new
benchmark in
quality education



OP JINDAL UNIVERSITY

INFORMATION 2017

SCHOOL OF ENGINEERING | SCHOOL OF MANAGEMENT
SCHOOL OF SCIENCE

OP Jindal University takes inspiration from the best known institutions in the country, yet aims to go beyond and create new benchmarks.

We invite candidates who have the hunger to learn and dream to make a difference in their life as well as the lives of those around them.

We aim to create individuals who are the best for the world and not just the best in the world.

At OP Jindal University we make sure that our students are industry ready. They learn-by-doing, have access to faculty with global experience, benefit from advanced learning infrastructure, and are supported by a strong career support programme.

fof/ ifjit us |

*to gain knowledge and
understanding by appreciative enquiry*

Putting Chhattisgarh on the global education map

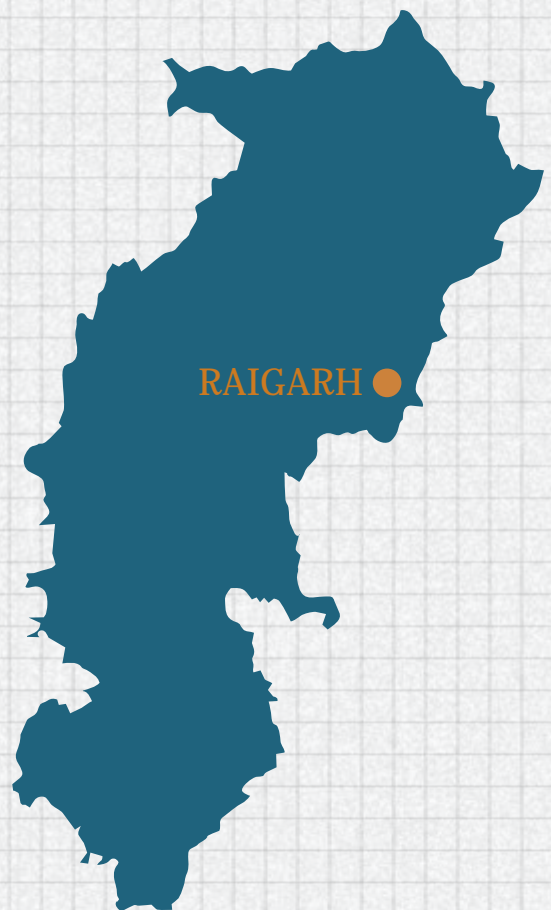
OP Jindal University

Founded by the Jindal Education and Welfare Society, OP Jindal University (OPJU) aims to develop young professionals and future leaders who will not only power growth and development in the state, but also make a mark globally.

At the core of the university's philosophy and approach lies the belief that students learn best when exposed to real world situations and enriching interactions with practitioners and professors.

We at OPJU believe that every student has innate potential that can be unlocked through quality teaching and mentorship.

OPJU was established by an Act of Legislature in the state assembly of Chhattisgarh in 2014.



“

Pursuit of knowledge through first-hand experience is the cornerstone of OP Jindal University. We aim to build an institution where students learn by doing, where real world challenges find practical solutions and innovation happens not by chance, but by design.

It is an attempt to make world class education accessible to deserving students both in metros and in smaller towns of India. Through its modern infrastructure, multi-disciplinary programmes and enriching campus life — the university will create the best leaders not only for India but also for the world.

”

Shri Naveen Jindal

Chairman, Jindal Steel and Power Ltd.



Supported by one of India's most dynamic business groups

OP JINDAL GROUP

OP Jindal Group has emerged as one of India's most dynamic business groups employing 50,000 people with manufacturing facilities across US, UK, India, Middle East, Indonesia and Australia. The group's motto has been 'growth with a social conscience.' At the heart of the group strategy is its commitment to sustainable development.

OP Jindal University has been established under

the aegis of the Jindal Education and Welfare Society. Other higher education initiatives of the society include OP Jindal Global University, OP Jindal Community College and Jindal Institute of Power Technology.

The close proximity of the Group's operations provide the students of the Schools of Engineering and Management with unique access to real-life projects and mentorship of senior professionals from industry.



Learning that is unique and powerful

Cross-disciplinary dual specialization, a great option for students: Often students recognise their passion for certain subjects as they learn. The University allows meritorious students to take additional courses and earn a 'minor' qualification in addition to their major. They also have the flexibility to change their department at the end of the first year.

Experiential learning: Course curriculum has been designed to promote learning by doing. During the course of the programme, students will spend time, including internships, working on projects at companies and gaining real-time experience on the latest technologies, processes and systems.

Connect with experts across the world: Guest lectures and an active mentorship programme connect students to experts from academia and

industry. Collaborations with leading institutions in the US, Europe and Asia expose students to innovations and teaching from around the world.

Creating leaders, not just engineers & managers: We aim to create successful professionals, well beyond 'employable graduates'. A healthy mix of subjects from the humanities, management and the liberal arts enable the development of wellrounded graduates.

Employability enhancement: An integrated Professional Development Programme helps students improve their soft skills, and increase their placement potential. Additionally, students are offered guidance for pursuing entrepreneurship, preparing for competitive exams, and undertaking higher studies in India and abroad through the Career Services Office.





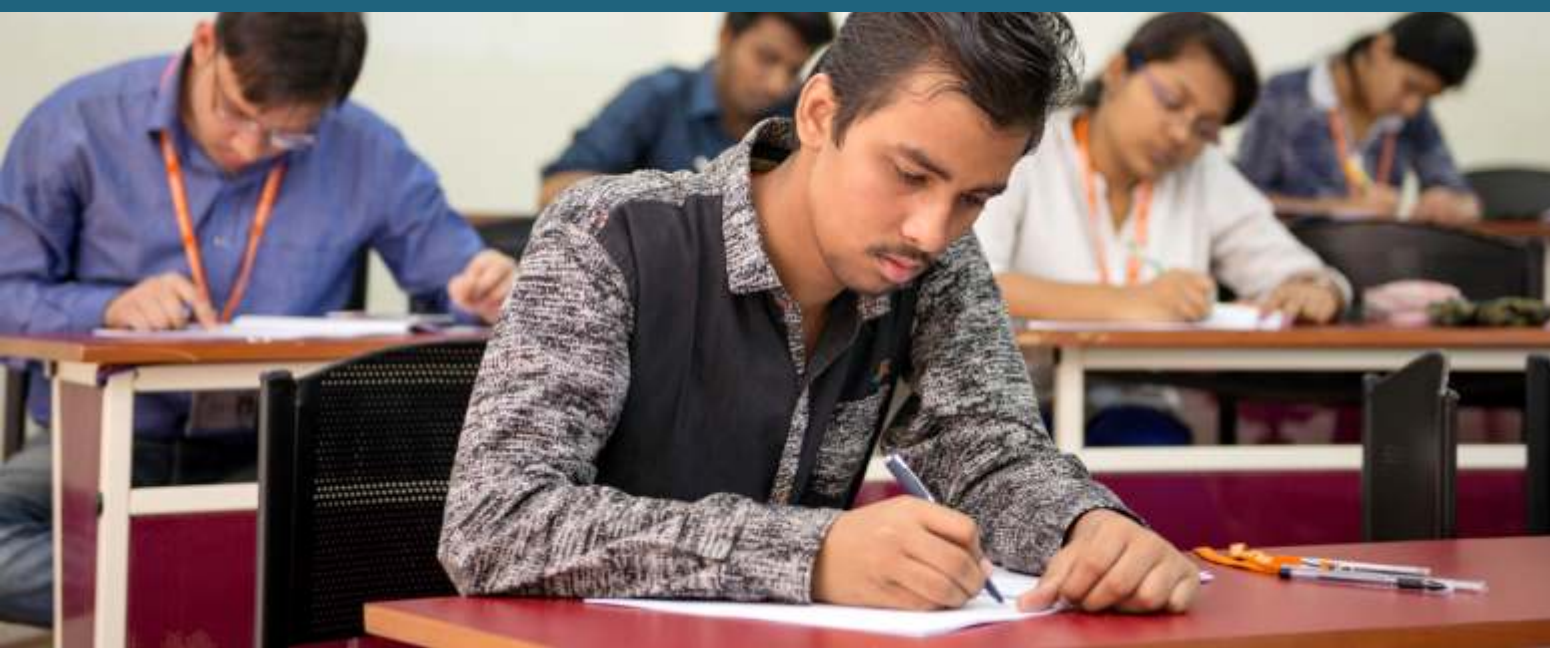
“

Our university recognises that every student is unique and provides a nurturing and stimulating environment to bring out the best in each student.

”

Dr Prabhu Aggarwal

Vice Chancellor



Led by educationists and professionals with global experience

Dr B K Sthapak

Chancellor

MTech and Ph D, University of Roorkee.

Dr Sthapak was Vice Chancellor of the Swami Vivekanand Technical University, Chhattisgarh, governing more than 50 affiliated engineering colleges in the state. He has served as Principal of several Engineering Colleges in Madhya Pradesh and retired from the post of Director of Technical Education, Government of Madhya Pradesh. He is a recipient of the Khosla Research award and Lifetime Achievement Award, Chhattisgarh Council of Science of Technology.

Dr Prabhu Aggarwal

Vice Chancellor

B Tech, IIT Kanpur; MBA and Ph D, University of Washington.

A highly respected academician, Dr Prabhu previously served as faculty and Dean at leading institutions including College of William and Mary, USA; University of Washington, USA; and Brazilian Business School, Brazil. He is an active consultant and researcher with publications on operations in the world's top journals. He was the Founding Director, Jindal Institute of Leadership Development, and Associate Dean and Professor at OP Jindal Global University, Haryana.

Dr Pramath Raj Sinha

Member, Academic Council

B Tech, IIT Kanpur; MSE and Ph D, University of Pennsylvania.

Dr Sinha helped set up and served as the Founding Dean of the Indian School of Business (ISB). He is a founding trustee of Ashoka University and serves on the review committee of IIT Kanpur. He has worked with McKinsey and led the ABP Group, one of India's most diversified media conglomerates.

Dr Sharad Maheshwari

Founding Dean, School of Management

B Tech & M Tech from IIT Roorkee and Ph D from University of South Florida.

Dr Maheshwari served as Professor of Business at Hampton University, USA for nearly 25 years. An expert in the field of operations, he has published in highly reputed international journals and won several awards for teaching globally. Dr Maheshwari has a B Tech from IIT, Roorkee and a Ph D in industrial engineering from University of south Florida, USA



“

Our philosophy is learning by doing, so that students can acquire more practical knowledge and better understanding of subjects

”

Dr B K Sthapak, Chancellor

Dr R D Patidar

Registrar

B Tech, GEC Rewa; ME, SGSITS Indore; Ph D, IIT Roorkee.

A recipient of several scholarships and awards such as the MHRD Scholarship, the Gold Medal at ME Level, the best paper award at the IEEE conference and the best teacher award. He worked as a Director, OP Jindal Institute of Technology (OPJIT), Raigarh, prior to Registrar, OPJU. Earlier he was Dean Academics and Officiating Director at MIT, Mandsaur (MP). He is having more than 20 years of experience in academia, industry and administration.

Dr Kamal K Mehta

Dean School of Engineering

B Tech, KIT Ramtek, Nagpur; M Tech, NIT Raipur; Ph D, CSVTU Bhilai.

Dr Kamal K Mehta received his Bachelor of Engineering from Kavikulguru Institute of Technology Ramtek Nagpur (1994) and M Tech Honors from National Institute of Technology Raipur. He received his Ph D in Computer Science and Engineering from the Technical University of Chhattisgarh in 2012.

Dr Mehta has published extensively in journals and refereed conference proceedings. His research area includes Design of Low Power Circuits, Bus Encoding Technique, Bio metric based Information Encryption, Development of Parallel and Distributed Algorithms, etc.

Dr Mehta is the recipient of "Engineering Achievement Award 2012" by Institution of India Bhilai Chapter on December 2012.

Dr Satyajit Banerjee

Dean, School of Science

B Sc, St Stephen's; M Sc, IIT Kanpur; Ph D, University of Pittsburgh.

Dr Satyajit Banerjee finished his schooling from La Martiniere followed by a Bachelor's Degree from St Stephen's College and a Master's degree in Chemistry from IIT Kanpur. After completing his doctoral degree from the University of Pittsburgh he did a post doctoral research stint at Dartmouth College (Ivy League), USA. He taught Chemistry at the undergraduate level in several colleges in the United States and has several publications in international journals.



Our legacy to young and creative minds is an advance pedagogy system for teaching & learning methods, which motivate them for passion learning. OPJU is highly committed for providing quality education and producing globally acceptable workforce

Dr Pramath Raj Sinha, *Chairman, Academic Council*



Strong career support programme personalised to students' needs

The University has a full-fledged Career Services Office that facilitates placements, provides guidance on higher education both in India and abroad with GATE and GRE preparations, and supports students who wish to pursue entrepreneurial opportunities.

- Aptitude assessment and individual counselling for students to identify areas of interest and potential success
- Industry and on-campus mentors for students to help plan careers, further studies, etc.
- Multiple industry interactions and visits, participation in live projects
- Personality and soft-skills development integrated with technical curriculum across all four years



After being here, I believe I've made a good choice. I'm impressed with the quality of teaching, infrastructure and the discipline.

Atul Singh, B Tech (Civil)



Our Prestigious Recruiters

2014-2015		Students Placed 178
2015-2016		Students Placed 141
2016-2017		Students Placed 75 till Feb. '17

“OPJU provided me the necessary acquaintance and trainings to develop desired competencies and skills which helped me for my selection in “M/s IBM Bangalore”

Anshu Kumar, B Tech - 2016 (CSE)



Great education Great experience Great careers

The University has following Centres of Excellence to nurture innovation, research and entrepreneurship among students

- Innovation, Entrepreneurship and Leadership
- Material Science and Engineering
- Robotics
- Internet of Things
- Power Electronics



Global Knowledge Partners

We have forged global partnerships for student and faculty exchange, research and curriculum collaboration, and continue to expand in other areas.

- Colorado School of Mines, USA
- Changwan National University, South Korea
- Hampton University, USA
- i-Nurture Education, India
- Intel Corporation, India
- University of Texas, Dallas, USA

We have drawn from the best institutions around the world and also taken care of the Indian context in designing our curriculum.

Dr R D Patidar
Prof. & Registrar

Frequent industry visits are organised every semester to allow students to learn first-hand and understand the application of knowledge gained in the classroom.

In addition to securing jobs with good organisations, our students have secured admissions in universities abroad, joined and excelled at research in several institutions and have started entrepreneurial ventures.



Advanced learning infrastructure

Learning is not confined to lecture rooms. Rather, a keen student is always experimenting and observing the world around. Advances in technology allow us to bring the best learning experience into classrooms.

At OPJU, students can experience learning infrastructure, that is unparalleled in the region, including:

- Intelligent Systems Lab supported by Intel
- Live classrooms and CISCO tele-presence to

enable faculty from other premium institutions around the world to teach OPJU students

- 3-D virtual learning laboratories to promote learning
- Digital library and online lecture resources accessible to students anywhere and any time
- 100% hi-speed Wi-Fi enabled campus
- Advanced labs in metallurgy, machining and mechanical simulation, robotics, mobile app development, wind-tunnel, etc.

The faculty is extremely supportive and always ready to help us. The library, including the digital library, has a great selection of relevant books - and is easily accessible.

Annu Mishra, MBA



School of Engineering (SoE)

The School of Engineering offering six under graduate and five post graduate programmes. The school have experienced faculty, well equipped laboratories and provide project based learning.

The university provides highly conducive and professional environment to its students through hands on practice in modern state of art laboratories and training. The courses in engineering are design based on the present industrial needs.



Dr K K Mehta
Dean, SoE

B Tech Programme

The course requirement for the engineering B Tech degree has been designed to address the diversity of specializations and the globally competitive landscape of education.

M Tech Programme

The various M Tech programmes offered by the University uniformly maintains the basic structure and philosophy of the post-graduate education in engineering & technology. All these programmes have three basic components: course work, series of research seminars and internship/industrial training.

Ph D Programme

Beginning with the 2017-18 academic year, SoE will offer Ph D in all branches of engineering. With an emphasis on applied research work, the Ph D program will prepare candidates for careers in higher education and industrial research.

Departments

Civil Engineering



The department is recognised for its superior faculty and well-equipped laboratories. It runs a unique programme

wherein the students gain professional experience by providing consultancy and testing services to the industry in the region, in partnership with faculty.

To ensure students are proficient in the latest tools and technologies, the department has advanced licensed software like Primavera, STAAD, Pro-2010, and Auto-CAD. Multiple workshops are organised to facilitate constant information sharing with premium institutions across the country. The entire graduating batch of the department achieved top results in the CSVTU examination, a testament to the good academic quality of the programme.

Computer Science and Engineering



Learning by doing is the driving philosophy of the department. To ensure that students are sought by IT companies, the department provides

training in HTML5, cyber security, computer networks and C++. A Center of Excellence with a focus on cloud computing has been established to educate students on cloud applications.

Partnership with the Indo US Collaboration for Engineering Education connects students with experts from US universities through live webinars. The students have also contributed to the development of applications for the Akash Tablet project in partnership with IIT Mumbai. Labs in Android, UNIX, Artificial Intelligence and

hardware simulation encourage students to experiment and learn through direct experience.

Electrical and Electronics Engineering



The department prides itself in possessing some of the finest and most advanced laboratories, equipment and

software in central India. One of its unique features is the Centre of Excellence in Power Electronics, set up in collaboration with Power Research & Development Consultants Bangalore. It provides students with an opportunity to conduct cutting edge research and training. Simulation platforms such as Lab View, Mi-Power and MATLAB offer students real-life experience, which is highly valued by industry. The department has more than 100 ongoing projects with government labs and industry where students and faculty collaborate to solve real-life problems.

Mechanical Engineering



With 20 laboratories having more than 30 kinds of major equipment, the department is one of the most innovation-driven department in

the state. The highlights of this infrastructure include equipment and software like Scorbot-ER 9 Robot, CNC lathe machine, CNC milling machine, wind tunnel, Lab View and ANSYS. A Centre for Excellence in Robotics has been established to enable students to learn about and excel in this new and growing field. Additionally, an MoU has been signed with Indo-German Institute of

Advanced Technology, Vishakhapatnam, to provide employment oriented training to students. For students aspiring to sit for the GATE exam, the department organises a mock test to help them prepare.

Metallurgical and Materials Engineering



OPJU School of Engineering is among the few institutions in the region that offers specialization in Metallurgical and

Materials Engineering. The Department has extensive research facilities in many areas of metallurgical engineering and materials science. The students get first hand experience and mentorship through supervised projects. Collaborations with leading institutions like Colorado School of Mines, USA, and Changwon National University, Korea, provide opportunities for student exchange and research collaborations.

The department has established Material Advantage Student Chapter, USA in association with most preeminent engineering professional's societies of USA: ACerS, AIST, ASM and TMS at OP Jindal University which is the first chapter in

India among any private university/institute. The function of this chapter is as a club on campus, and students organize a variety of social and professional development activities.

Applied Science and Humanities

The department of Applies Science and Humanities comprise multi-disciplinary faculty members mainly from Physics, Chemistry, Mathematics and Humanities to cater the need of students.

The department is established with the mission of innovation and new technologies that drive the way we experience life, expand human knowledge and benefit society through education and research on fundamentals of Science and Humanities. The department provides state of art Research Laboratories to students to explore, innovate and excel in their chosen discipline.



Courses Offered (School of Engineering)

B Tech (4 years full time)

- Civil Engineering
- Computer Science Engineering
- Electrical & Electronics Engineering
- Mechanical Engineering
- Metallurgical and Materials Engineering
- CSE-Cloud Technology & Information Securities

Eligibility

- At least 50% marks in Higher Secondary (Class XII) with science Subjects (Physics, Chemistry, Mathematics and Language Subjects) .
- A relaxation of 5% marks in class XII will be made for SC/ST/OBC/PWD candidates.
- Performance in JEE Mains and/or Chhattisgarh Pre Engineering Test (CGPET).

M Tech (2 years full time)

- Computer Science and Engineering
- Material Science and Technology
- Power Plant Engineering and Energy Management
- Power Electronics and Power System
- Applied Mathematic and Computing

Eligibility

- Computer Science and Engineering: BE/ B Tech or equivalent degree in Computer Science and Engineering / Information Technology or MCA with minimum aggregate of 50%.
- M Tech in Material Science and Technology: BE/B Tech or equivalent degree in Metallurgy/ Mechanical/ Chemical/ Production/ Industrial (or) MSc (Physics/Chemistry/Material Science/Nano Science and Technology) with minimum aggregate of 50%.
- M Tech in Power Plant Engineering and Energy Management: B E / B Tech or

equivalent degree in Mechanical / Electrical / Electrical and Electronics Engineering / instrumentation with minimum aggregate of 50%.

- M Tech in Power Electronics and Power systems: BE / B Tech or equivalent degree in Electrical/Electrical and Electronics/Electronics and communication Engineering or M Sc Electronics from recognized university with minimum aggregate of 50%.
- M Tech in Applied Mathematic and Computing: BE / B Tech or equivalent degree in Computer Science and Engineering with minimum aggregate of 50% or M Sc Mathematic from recognized university.
- A relaxation of 5% marks in Graduation will be made for ST/SC/OBC/PWD candidates.
- Desirable: A valid GATE score in above disciplines.

Ph D

- Civil Engineering
- Computer Science Engineering
- Electrical & Electronics Engineering
- Mechanical Engineering
- Metallurgical and Materials Engineering
- Applied Science & Humanities*

Eligibility

- ME/M Tech or equivalent degree in relevant branch of Engineering with minimum aggregate of 50% .
- *M Sc / M Phil for applied science and MA / M Phil for humanities or equivalent PG degree with minimum aggregate of 50%
- Desirable: A valid GATE /NET score in above disciplines
- A relaxation of 5% will be made for SC/ST/OBC/PWD candidates

School of Management (SoM)



Management including the programme courses, experiential method of learning, opportunities for practical experience in companies etc., is designed to help the students get on a path to successful careers and eventual leadership.



Dr Sharad Maheshwari
Dean, SoM



The School of Management, OP Jindal University was launched in 2015 and has been offering short-term courses in areas of leadership development, operations and supply chain management, finance and strategy to working professionals and senior executives through its Management Development Programme wing. The School also draws on the rich legacy of highly acclaimed schools of law, liberal arts and management established at our sister

institution - OP Jindal Global University in the National Capital Region in 2009.

The School of Management offers will accept offers the BBA, MBA, and Ph D programmes with a specialization in Finance, Operations, Marketing, Human Resources, Cost Accounting and Hospitality and Tourism. The curriculum and teaching for these programmes has been developed in close cooperation with industry and leading global institutions.

BACHELOR IN BUSINESS ADMINISTRATION (BBA)

The BBA programme is a three year full-time course, intended as the first degree which helps students develop a well-rounded skill set to enter the world of business. Students study a diverse set of subjects covering the fundamentals of business management and gain an understanding of major areas of global business. With this foundation, students are well positioned to go for further specialisation in disciplines such as Finance, Marketing & Sales, Analytics, Operations or pursue a more general management oriented path at work or study. Specially designed elective courses will help students who wish to join family businesses.

MASTER OF BUSINESS ADMINISTRATION (MBA)

The MBA degree programme is a two year full-time course for students with a prior graduate degree in any discipline. The programme goes beyond helping students imbibe the principles of general management, where most MBA programs end, to developing personal and professional leadership capabilities aimed at achieving one's full potential. The programme takes advantage of the unique access and situation of the University, offering one of the strongest foundations in the area of operations encompassing supply chain and logistics, manufacturing and design. The programme is closely aligned with industry requirements especially in areas of finance, marketing and sales and will provide students a unique opportunity to intern in organisations and gain real experience even before they complete the course.

Courses Offered (School of Management)

UG Programmes (3 years full time)

- Bachelor in Business Administration (BBA)
- BBA - Financial Services(CMA certification optional)
- BBA - Tourism & Hospitality

Eligibility

- At least 50% marks in Higher Secondary School Certificate Examination (10+2 examination) or equivalent.
- A relaxation of 5% will be made for SC/ST/OBC/PWD candidates

Master in Business Administration (MBA) (2 years full time)

Eligibility

- At least 3-year Bachelors' degree, or equivalent, in any discipline from a recognised University with minimum 50% aggregate marks.
- Valid CAT / CMAT / XAT / MAT / ATMA score preferred.
- A relaxation of 5% will be made for SC/ST/OBC/PWD candidates

Ph D

- PhD in Management

Eligibility

- MBA or equivalent PG degree with minimum aggregate of 50%.
- A relaxation of 5% will be made for SC/ST/OBC/PWD candidates



School of Science (SoS)

“

The university is a great place for a teacher as it values education through liberty in individual thinking and implementation. The courses in the department are designed such that students benefit through hands-on as well as virtual lab based learning.

”

Dr Satyajit Banerjee
Dean, SoS



The School of Science, OP Jindal University launched in year 2017. The School has laid a balanced emphasis on the pursuit of basic knowledge in science with the challenge of imparting good quality education, the school also focus on the application of its research findings for industrial and social benefits which lays emphasis on academic excellence.

The Curriculum of SoS is structured to provide a common, broad-based foundation, imparting fundamental concepts and principles in Science through lectures, tutorials, discussions and presentations. The curriculum has a significant practical component that trains students in experimental skills essential to Science. Student's seminars and assignments are designed to be highly challenging, which

cover way for the students to bring out their intellectual and interactive skills in analyzing scientific problems. The students are required to do research as part of their curriculum and submit a project.

Courses Offered*

B Sc, M Sc and Ph D

* Proposed from academic session 2018-19

Admission Process @ OPJU

- Apply online for the programme of choice at OPJU School of Engineering or School of Management.
- Application should be accompanied by Application Fee of Rs. 1000* payable online (Internet banking/Credit/Debit card) or Cash/DD/Bank Transfer.
- A merit list will be announced for eligible candidates for each rounds, The shortlisted candidates will be asked to appear for Counselling and candidate, subject to fulfilment of requisite conditions and verification of documents, will be issued provisional admission offer and asked to deposit fee by the stipulated date.
- If candidates don't pay fee by the stipulated date, the admission would be deemed cancelled and seats would become vacant for the next round of Counseling.
- There will be various rounds of Counseling and after that if there are any unfilled seats, they will be filled on the basis of rolling Counseling (First come first serve basis).

**Candidates of reserved category (SC/ST/OBC/PWD) of Chhattisgarh domicile and Female candidates are exempted from Application fee.*

Foreign/NRI students - Eligibility

- Candidate who have requisite qualification from foreign universities or boards of Higher education as equivalent to the higher secondary, graduation, post graduation stage of India and recognized by Association of India Universities (AIU) are eligible for admission.



Fee Structure

Academic Fees per Semester (in Rs.) for Students Admitted in 2017-18

B TECH

Description/Year	2017-18	2018-19	2019-20	2020-21
Tuition Fee [@]	44,000	44,000	50,500	50,500
Professional Development fees	6,500	6,500	8,000	8,000
Examination Fee	2,500	2,500	3,000	3,000
Sports & Amenities fees	2,000	2,000	2,000	2,000
SEMESTER TOTAL	55,000	55,000	63,500	63,500
ANNUAL TOTAL	1,10,000	1,10,000	1,27,000	1,27,000

M TECH

Description/Year	Sponsored		Non Sponsored	
	2017-18	2018-19	2017-18	2018-19
Tuition Fee	44,000	44,000	27,500	27,500
Professional Development fees	6,500	6,500	6,500	6,500
Examination Fee	3,000	3,000	3,000	3,000
Sports & Amenities fees	2,000	2,000	2,000	2,000
SEMESTER TOTAL	55,500	55,500	39,000	39,000
ANNUAL TOTAL	1,10,000	1,10,000	78,000	78,000

BBA

Description/Year	2017-18	2018-19	2019-20
Tuition Fee [#]	30,000	30,000	35,000
Professional Development fees	6,500	6,500	8,000
Examination Fee	2,500	2,500	3,000
Sports & Amenities fees	2,000	2,000	2,000
SEMESTER TOTAL	41,000	41,000	48,000
ANNUAL TOTAL	82,000	82,000	96,000

MBA

Description/Year	2017-18	2018-19
Tuition Fee	75,000	75,000
Internship & Projects fees	10,000	10,000
Examination Fee	3,000	3,000
Sports & Amenities fees	2,000	2,000
SEMESTER TOTAL	90,000	90,000
ANNUAL TOTAL	1,80,000	1,80,000

PhD

Description/Year	2017-18	2018-19	2019-20
Tuition Fee	27,500	27,500	30,000
Examination Fee	2,500	2,500	10,000
SEMESTER TOTAL	30,000	30,000	40,000
ANNUAL TOTAL	60,000	60,000	80,000

Other Charges per Semester (in Rs.) for 2017-2018

Hostel & Mess Charges*	45,000
Transportation Fee (for day-scholars)**	15,000

One Time Charges at the time of Admission (B Tech, BBA, M Tech, MBA & PhD)

Caution Money (Refundable)	5,000
Uniform Fee***	1,500
Hostel deposit* (Refundable)	8,000
Admission Fees (BBA & B Tech)	1,000
Admission Fees (MBA, M Tech & PhD)	2,000

*Applicable for students availing hostel facilities.

**The University will provide 20% discount on transportation fee for female students.

***Not applicable for M Tech students.

[@] B Tech- CSE-Cloud Technology & Information Securities the tuition fees will be Rs. 49,000 and other component will remain same.

[#] BBA- Financial Services(CMA certification optional), Tourism & Hospitality the tuition fees will be Rs. 34,000 and other components will remain same.

SCHOLARSHIPS

A. Entry Level

B Tech

S. No.	Scholarship	Amount (Rs.)	Eligibility*
1	Shri OP Jindal	75,000	95% and above
2	Shri Prithviraj Jindal	50,000	90% and above to 95%
3	Shri Sajjan Jindal	40,000	88% and above to 90%
4	Shri Ratan Jindal	25,000	85% to 88%

BBA

S. No.	Scholarship	Amount (Rs.)	Eligibility*
1	Shri OP Jindal	55,000	95% and above
2	Shri Prithviraj Jindal	35,000	90% and above to 95%
3	Shri Sajjan Jindal	15,000	85% to 90%

*Aggregate of class XII (10+2) marks of all subjects excluding optional/additional subjects viz Physical Education/ Fine Arts /Performing Arts/ vocational / non written subjects, etc. of any recognized board.

Note:

The scholarships are given on an annual basis. To continue the scholarships after the first year, the student must have to maintain a certain level of prescribed academic performance during the course of the programme.

B. Merit cum Means

In addition to the entry level scholarships the University also awards the Merit cum Means Scholarships every year. The Merit Scholarship is to promote, acknowledge & inculcate excellence among the students and the Means Scholarship is to provide financial support for educational grooming of economically weaker students.

C. OPJEMS

The students of School of Engineering and School of Management of the University are also eligible for appearing in one of the prestigious National Level Scholarship named "OP Jindal Engineering and Management Scholarship" (OPJEMS). For more details visit - www.opjems.com.

Receiving of meritorious scholarship always become a proud and pleasure moment and it gives a great financial support to anyone, but the most important is that one should get a right place to recognized his/her talent. I personally found that OPJU provides excellent opportunities for its meritorious and needy students to acknowledge their talent and help them to realize their dreams.

Rinky Agrawal, B Tech (EEE),

An achiever of OPJEMS-2014 & 2016 and Entry Level Scholarship



CAMPUS LIFE



Extensive sports facilities include an indoor badminton court, volleyball courts, a running track, football and cricket grounds





Multi-cuisine dining halls and a cafe lounge on campus.



Multiple hobby clubs, interest groups and student festivals to ensure well rounded personality development





The annual technical festival of the University, Technorollix, attracts graduate students from a large number of institutions and is fully managed by the students. They also manage a number of vibrant student clubs that conduct activities on and off the campus. Prominent ones are Abhivyakti, the fine arts and culture club; Graphia, the photography club; Robotics club, Android club and Environment & community development club. Participation is open to all students.



Safe and well-equipped campus

- Residential facility on campus with a capacity of 1,000 students in the boys' hostel and 300 students in the girls' hostel
- 24x7 security and biometric access on campus to provide a safe environment
- Zero tolerance policy on ragging
- University transport services for Students
- Six-bed health centre with a resident medical officer
- Self-sufficient campus with 24-hour ATM, a bank, a post office, a shopping complex, kiosks and barber shops
- Community environment with most faculty and their families living on campus



Well-equipped fitness centre and gymnasium with a qualified instructor





OP JINDAL UNIVERSITY
OP Jindal Industrial Park
Punjipathra, Raigarh - 496109 [C.G.]
1800 3000 4100 (toll free) | 7762 304000
www.opju.ac.in | info@opju.ac.in